

FT FLUIDOTEHNIC

HYDRAULIC DEVICES AND SYSTEMS

CATALOG OF DEVICES



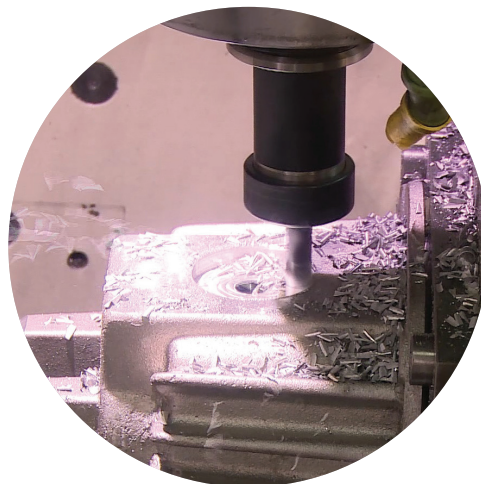
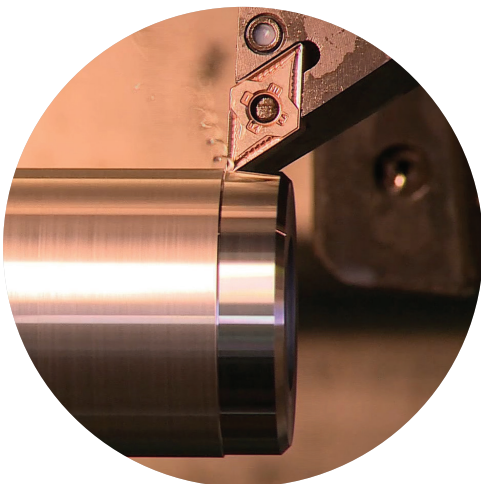


- FLUIDOTEHNIC's production program is based on its own development. Thanks to that, all the products are the result of the engineering staff work, as well as the quality and skilled workers in manufacturing and installation. Each serial product during the conquest passes through the phase of prototype development, functional tests and check in real operating conditions. Following step is removal of all possible defects and then, based on that, test series is produced. This is how we achieve high quality of manufactured devices. In case of the individual production, after the functional testing, we deliver the product to the customer.
- Since its foundation FLUIDOTEHNIC Ltd. has been continuously investing both in the expansion of commercial building and the purchase of modern equipment for the production, control and techno-economic support. It is located in the industrial zone of Vrnjacka Banja, on a lot size ~ 2ha. It consists several buildings, connected into a functional whole area of 4000 m2. The whole complex is adjusted to the environment- we are taking good care of health, work safety and environmental protection.





- Market research, device development, technical assistance and personnel training free of charge for all our customers is the main task of this service. Many years of experience in the development tasks of hydraulics, pneumatics and lubrication techniques, as well as the latest computer technology guarantee that our customers will get the optimum technical solution. During the development, every device passes precisely defined procedure, starting from making the design concept, followed by manufacturing and testing prototypes and going into production.
- It consists of several facilities and departments: foundry of non-ferrous metals, mechanical drive, locksmith department, installation and technical control. All operations from the casting to the final machining are performed with the universal and software machines. Control and assembly is 100%. When the assembly is finished, each device is being tested on the test stand and on the basis of the results it gets the appropriate certificates and guarantees. On each call of the user, service teams come in as soon as possible, with spare parts and the necessary tools, regardless of whether the equipment is in warranty or out of warranty period.

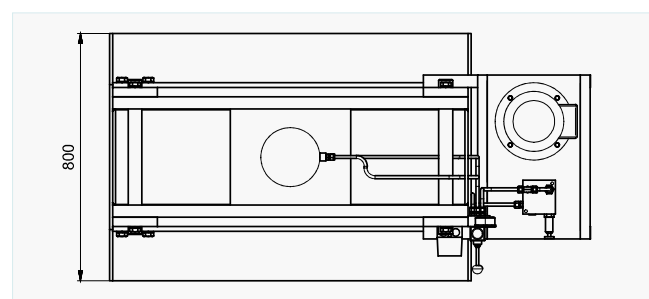
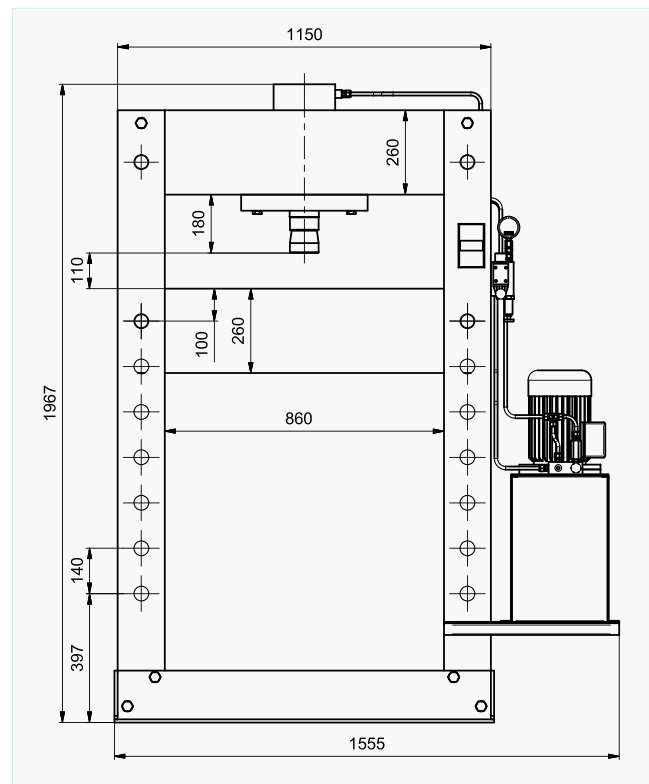
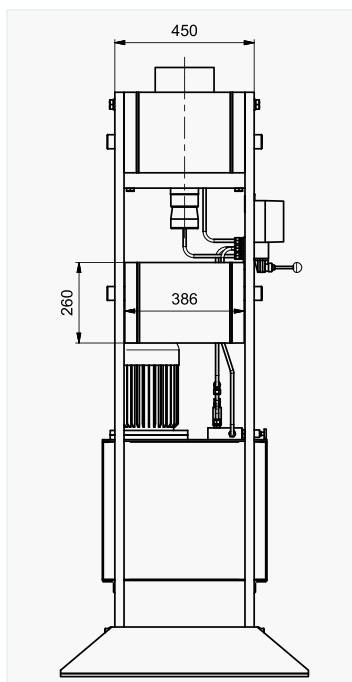


HYDRAULIC PRESS HP - 60



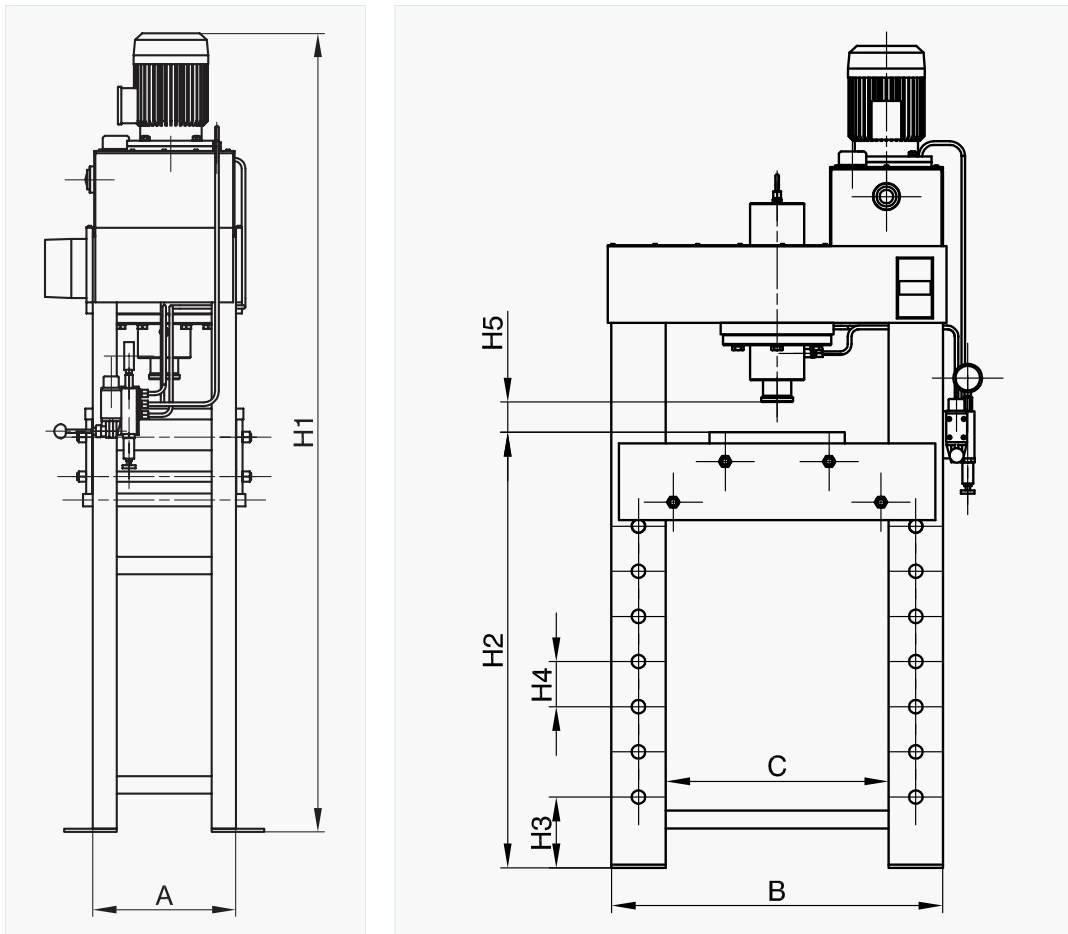
Ordering code	15 - 0200
Crimping force	60.000 daN
Piston stroke	180 mm
Min. height of working space	110 mm
Max. height of working space	940 mm
Electric motor	1,5kW; 3x400V; 50Hz
Pul-out piston speed without load	5,7 mm/sec
Pul-out piston speed with load	1 mm/sec
Pressure at rapid stroke	50 bar
Crimping pressure	Max. 300 bar
Max. pressure	350 bar
Fluid - mineral oil	Hidrol HD-46
Temperature range	-20 to +50°C
Mass	780 kg

Hydraulic presses are applied for assembling and disassembling of various machine parts with tight fit (bushes, bearings, guides . . .), in production plants and service workshops. It's also suitable for deep-rolling of sheet metal and shaft straightening. It's possible processing by deformation of pieces with different dimensions due to changing the position of the working surface by the height and a great piston stroke. Press is a two-stage with the quick approaching stroke and slow-speed crimping stroke. Hand operating distributing valve is used for precisely lowering and return of the piston. Pressing force is adjusted by pressure relief valve (max 300 bar). The presses of various dimensions and pressing forces are available on customer request..



HYDRAULIC PRESSES

Hydraulic press is applied in manufacturing plant and service workshops for assembling and disassembling of machine parts with tight fit, such as bearings and bushes. It is also suitable for metal sheet extraction and rod straightening. The working surface can be fixed at different levels depends of dimension of working piece. Hand operating distributing valve is used for precisely lifting and downing of the cylinder rod. Pressing force is adjusted by pressure relief valve (max 160 bar). The presses of various dimensions and pressing forces are available on customer request.



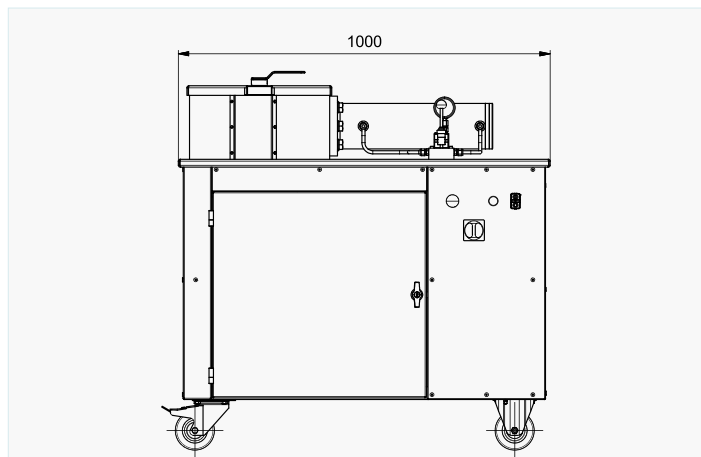
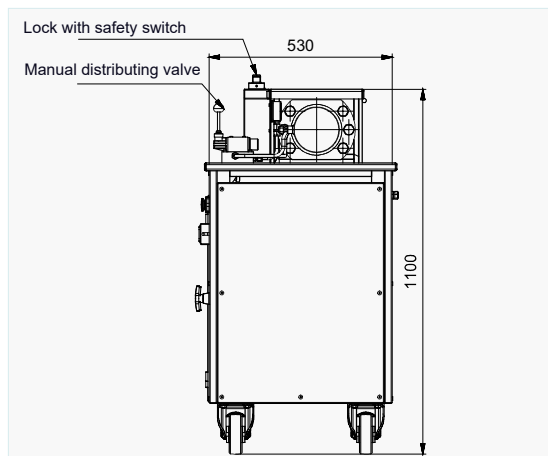
Ordering code	15 - 0100	15 - 0135	15 - 0150	15 - 0180
Pressing force	80 kN	125 kN	200 kN	320 kN
Piston stroke	260 mm		400 mm	
Pressing time	35 sec	55 sec	70 sec	120 sec
Rejecting time	14 sec	34 sec	40 sec	90 sec
Max. operating pressure	160 bar			
Displacement of the pump	2,2 dm ³ /min		4,0 dm ³ /min	
Electric motor	1,1 kW 380 V 50 Hz 1370 rpm			
Fluid - mineral oil	Hidrol HD-46			
Tank volume	10 dm ³		20 dm ³	
Mass	200 kg	210 kg	400 kg	420 kg

Code	15-0100	15-0135	15-0150	15-0180
A	325		360	
B	735		760	
C	510		520	
H1	1820		1980	
H2	965		1000	
H3	157		288	
H4	100		100	
H5	68		84	

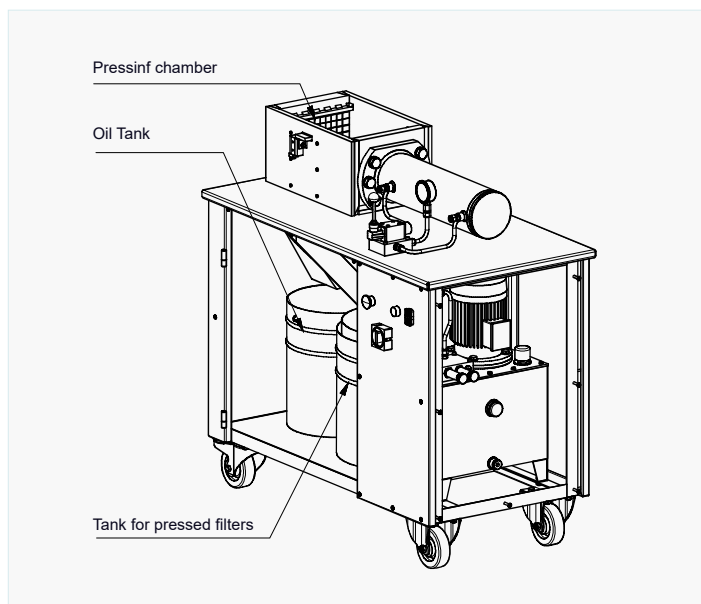
HYDRAULIC PRESS (FOR OIL FILTERS)



Hydraulic press 90-2550 is applied for the recycling of used and worn-out cartridges and oil-filters, motor vehicles, mining and construction machines. In each filter, depending on the size and type, remain 0,5 to 3 lit. of used oil. Press separates the remaining oil from the filter and ensures environmental protection in accordance with the requirements of ISO 14001. The oil was separated by pressing in one vessel, the pressed filters in the second and thus hazardous waste is separated from non-hazardous waste. Depending on the filter size, in one cycle can be crimped one to two filters. Crimping chamber is closed and secured with a safety lock. The maximum capacity of the press is 40 to 120 filters/working hour. The presses of various dimensions, capacity and automation level are available on customer request.



Ordering code	90 - 2550	
Crimping force	20.000 daN	
Dimensions of compress. chamber	170x250x300 mm	
Piston stroke	300 mm	
Rapid stroke	800 mm/min	
Slow stroke	200 mm/min	
Pressure at rapid stroke	50 bar	
Pressure at slow stroke	160 bar	
Fluid - mineral oil	Hidrol HD46	
Temperature range	-10 ; +50 °C	
Electric motor	Power	1,5 kW
	Voltage	400 V/50 Hz
	rpm	1370 rpm
Max. capacity	40 ; 120 filters/h	
Mass	325 kg	



ACTUATOR FOR CORRECTION OF CONVEYORS LATERAL DEFLECTION



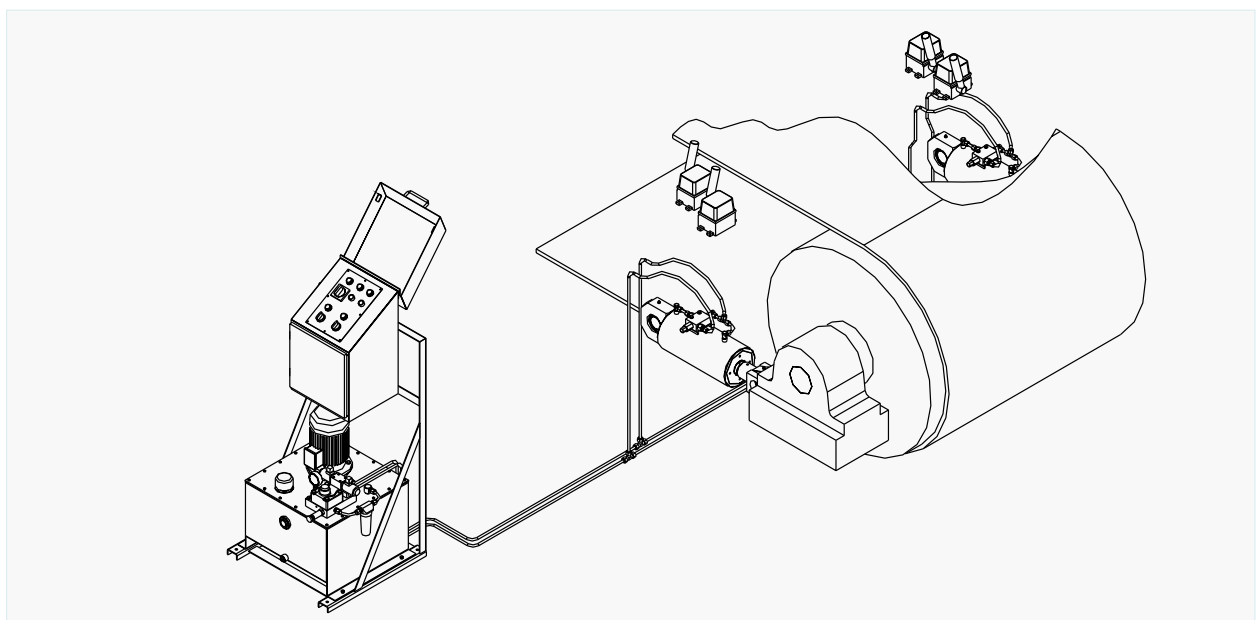
Actuator 90-0250 is applied for automatic correction of lateral deflection of the conveyors. The hydraulic cylinders swivel the band roller according to the signal from proximity detectors and keep the band in proper position. Control valve block assembled directly on the cylinder prevents the creep movements.

The speed and sensitivity of the cylinders can be adjusting by changing the pump flow. In the same way it is possible to adjust the band tension without additional balance weights.

The actuators of various characteristics are available on customer request.

In the same way it is possible to adjust the band tension without additional balance weights.

Ordering code	90 - 0250	
Maximal working pressure	160 bar	
Fluid - mineral oil	HIDROL HD-46	
Working temperature	-20 to +50 °C	
Tank volume	50 dm ³	
Flow rate	0 to 3,8 dm ³ /min	
Piston stroke	200 mm	
Cylinder force at maximum pressure	32 000/26 000 daN	
Electric motor	Power	1,5 kW
	Voltage	380 V/50 Hz
	rpm	1405 rpm
Mass	285 kg	



ACTUATOR FOR OSCILLATING MOTION

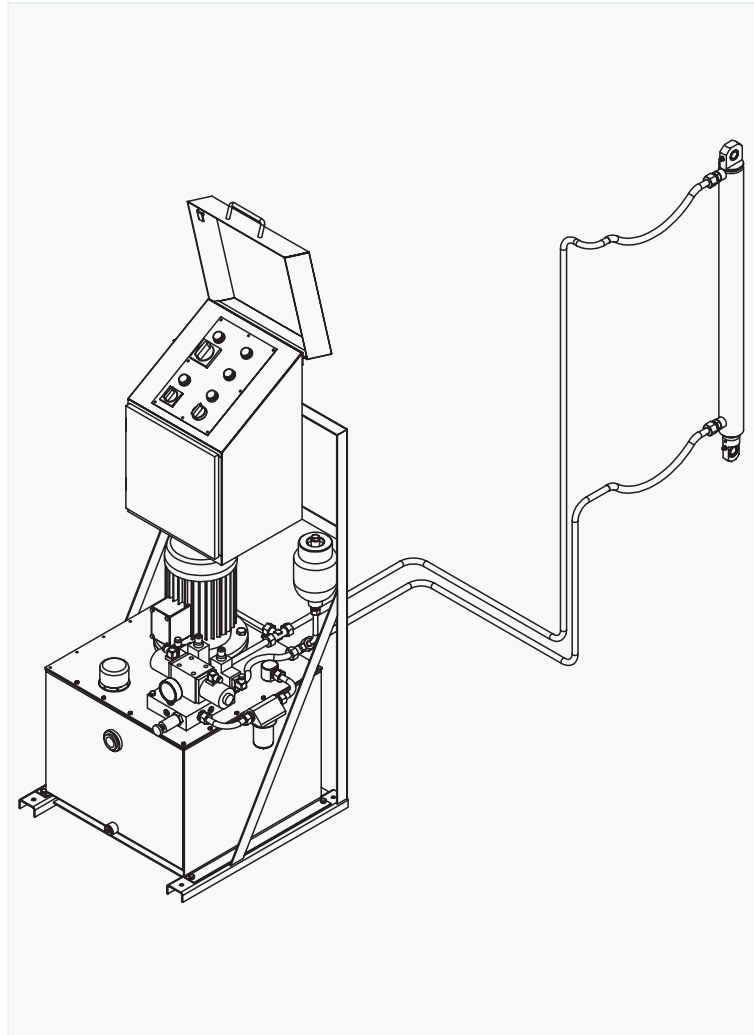


Actuator 90-0300 is applied oscillating motion with fixed amplitude according to the cylinder stroke. Movement of the cylinder rod can be continual or with a pause at the end position. Changing direction of the movement carried out without proximity switches so the device is insensitive of the dust and humidity.

End position cushioning of the hydraulic cylinders and hydraulic accumulator provide smooth operation of the system.

The actuators of various characteristics are available on customer request.

Ordering code	90 - 0300	
Cycles per minute	3,6 to 9	
Max working pressure	60 bar	
Fluid - mineral oil	HIDROL HD-46	
Working temperature	-20 to +50 °C	
Tank volume	80 dm ³	
Flow rate	22 dm ³ /min	
Piston stroke	750 mm	
Cylinder force at max. pressure	1 000/700 daN	
Electric motor	Power	3 kW
	Voltage	380 V/50 Hz
	rpm	1420 rpm
Mass	170 kg	



ACTUATOR

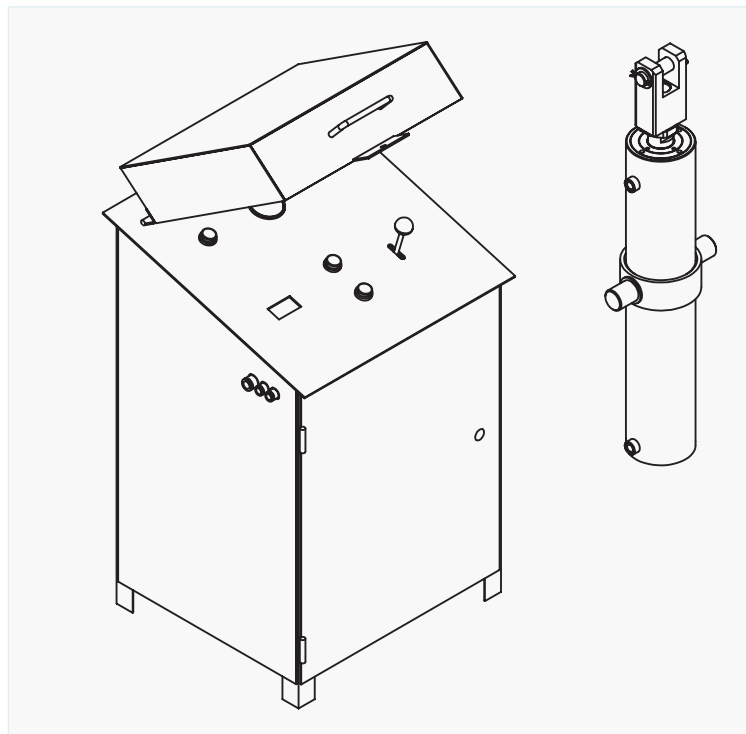
12T/120



The main purpose of the actuator is for produce force for closing and opening various types of valves and doors.

Hand operated hydraulic distributing valve is used for the controlling of the device. Version with solenoid valve is also available on the customer request.

Installation dimensions and configuration of the system are customized under customer request. Actuators with various characteristics are available on customer request.



Ordering code		90 - 0120	90 - 0120/1
Max working pressure		100 bar	130 bar
Fluid - mineral oil		HIDROL HD-46	
Working temperature		-20 to +50 °C	
Tank volume		20 dm ³	
Flow rate		6,3 dm ³ /min	
Piston stroke		500 mm	
Cylinder force at max. pressure		7 800 / 6 200 daN	10 200 / 8 100 daN
Electric motor	Power	1,1 kW	1,5 kW
	Voltage	380 V/50 Hz	
	rpm	1410 rpm	1405 rpm
Mass		135 kg	140 kg

TANDEM ACTUATOR

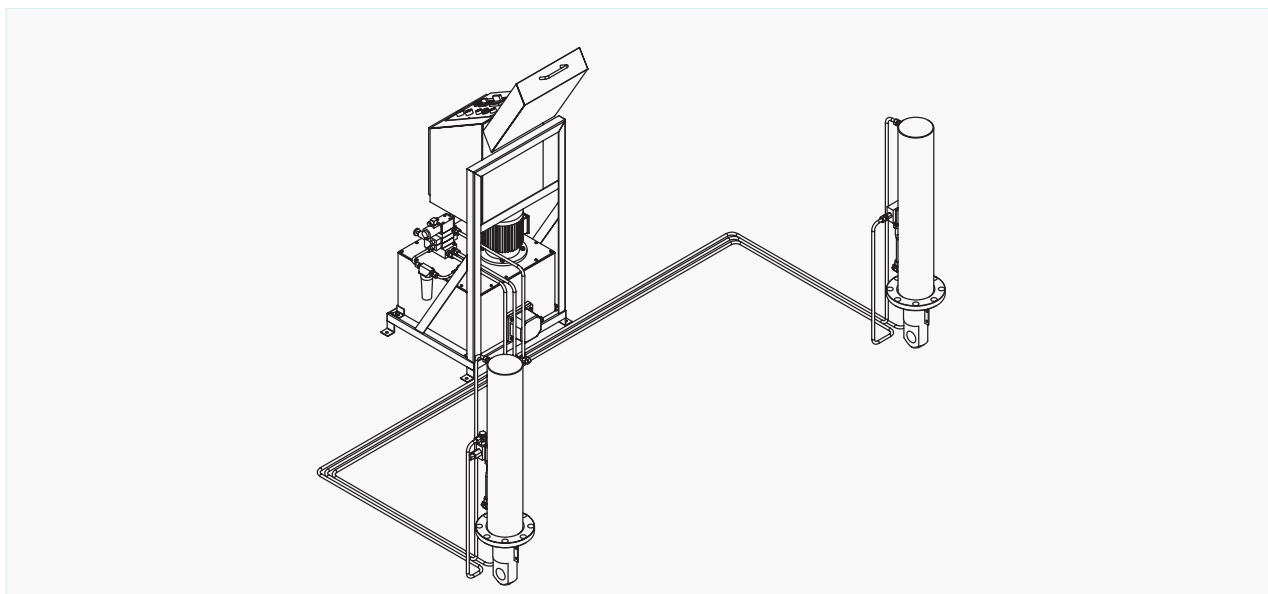


Tandem actuator is applied for synchronized lifting and downing of the cargo and holding it on the requested level. Speed of the cylinders movement is adjustable and independent of the load. Versions with manually and electric remote control are available. Automatic control with level indicator is available on customer request.

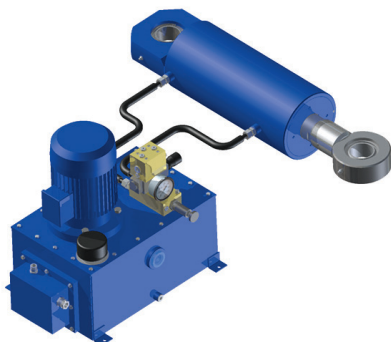
For low temperature operation device is equipped with heater and thermal switch.

Installation dimensions, load capacity, speed, and stroke of the cylinder are customized under customer request.

Ordering code	90 - 0210	
Max working pressure	140 bar	
Fluid - mineral oil	HIDROL HD-46	
Working temperature	-30 to +50°C	
Tank volume	45 dm ³	
Flow rate	2,4 dm ³ /min	
Piston stroke	650 mm	
Cylinder force at max. pressure	2x17 000/2x13 000 daN	
Electric motor	Power	1,1 kW
	Voltage	380 V/50 Hz
	rpm	1370 rpm
Oil heater	220 V, 1000 W	
Thermostat	-30 to +30°C	
Mass	270 kg	

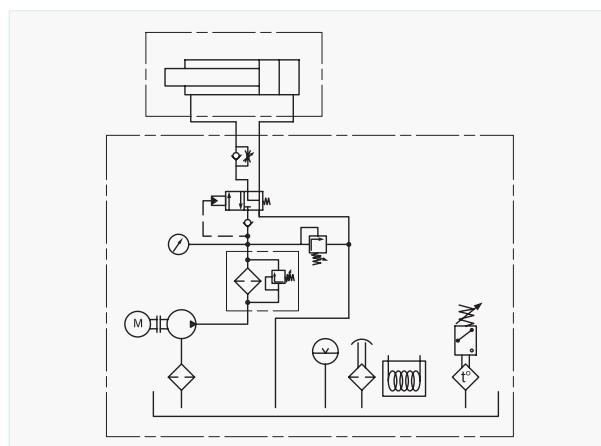
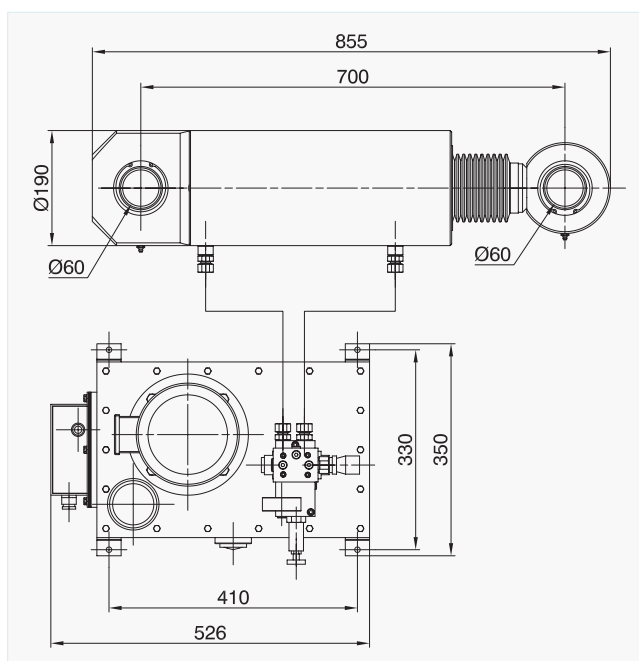
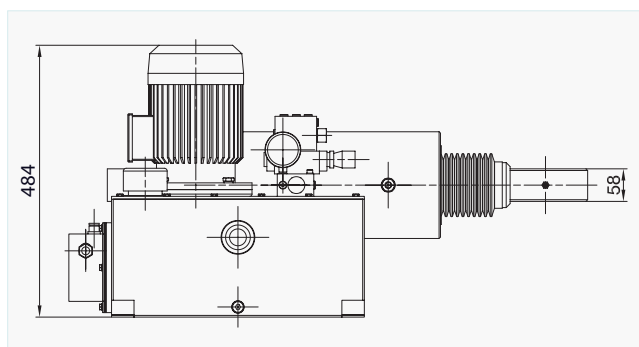


RAIL CATCHER ACTUATOR 15T/220



Actuator is mainly used for produce great breaking forces to anchoring big cranes. Hydraulic power unit with gear pump is assembled in the robust housing. After the starting electric motor of the power unit and switching on the valve solenoid, oil flows to the front side of the hydraulic cylinder. Retracting force of the cylinder overcomes the spring force of the breaking mechanism. The crane is ready to move. Limitation of the releasing force is carried out by the adjusting pressure on the pressure relief valve. It is recommended to adjust releasing force 15 to 20% over the spring force. To prevent damage of the device, do not adjust the releasing pressure over the maximum permissible value. After the switching of the electric motor and valve solenoid, spring force moves the cylinder rod to the start position. The crane is anchored. Breaking speed can be adjusted by check throttle valve. Down direction increase the speed. The swinging bearing is mounted at the end of the cylinder rod. For low temperature operation device is equipped with heater.

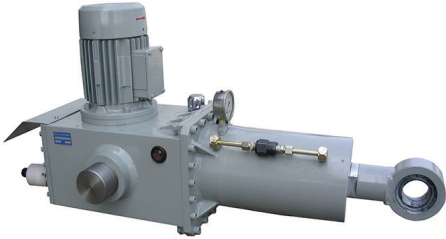
Actuators of other dimensions and characteristics are available on customer request.



Ordering code	15T/220	
Inserting force on the rod	max. 160kN	
Piston stroke	220mm	
Retract piston speed	6,06mm/s	
Time of rod extraction	adjustable	
Pump	Flow	6,0dm ³ /min
	Working pressure	max. 100bar
Fluid - mineral oil	Shell Tellus* Arctic 32	
Tank volume	20dm ³	
Electric motor	1,5kW; 400V; 50Hz	
Oil heater	220V; 500W	
Thermostat	0 to +40°C	
Ambient temperature *	-40 to +50°C	
Mass	136kg	
* Min. temp. without oil preheating -15°C		

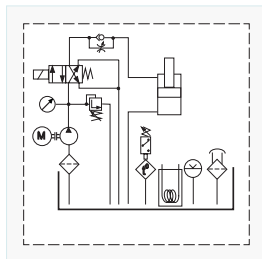
ACTUATOR - ELECTROHYDRAULIC RELEASING DEVICE

12T/120.000

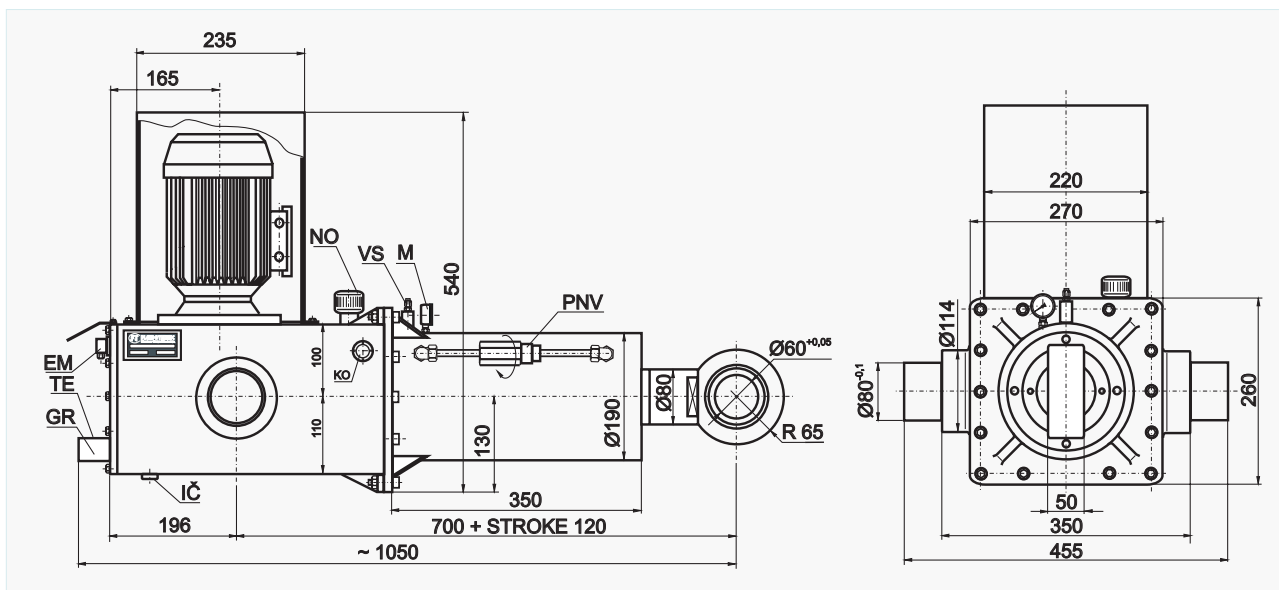


Ordering code	12T/120.000	
Retracting force	max. 120kN	
Piston stroke	120mm	
Retracting time	17s	
Ejecting time	adjustable from 6 to 60s	
Flow	6,3dm ³ /min	
Pump	max. 80bar	
Working pressure	max. 80bar	
Fluid - mineral oil	Shell Tellus* Arctic 32	
Tank volume	16dm ³	
Electric motor	Power	1,1kW
	Voltage	400V 50Hz
	rpm	1370 rpm
Solenoid valve	220V 50Hz 0,13A	
Oil heater	220V 500W	
Thermostat	0 to +50°C	
Ambient temperature *	-40 to +50°C	
Mass	180kg	
* Min. temp. without oil preheating -15°C		

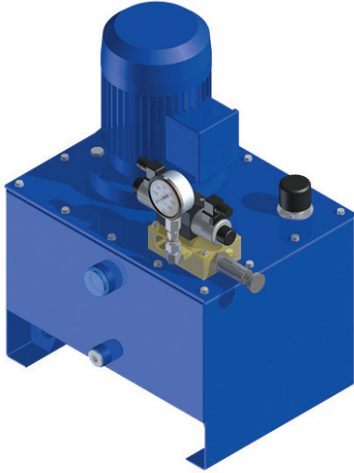
Actuator is mainly used for produce great breaking forces to anchoring big cranes. Hydraulic power unit with gear pump is assembled in the robust housing. After the starting electric motor of the power unit and switching on the valve solenoid, oil flows to the front side of the hydraulic cylinder. Retracting force of the cylinder overcomes the spring force of the breaking mechanism. The crane is ready to move. Limitation of the releasing force is carried out by the adjusting pressure on the pressure relief valve. It is recommended to adjust releasing force 15 to 20% over the spring force. To prevent damage of the device, do not adjust the releasing pressure over the maximum permissible value. After the switching of the electric motor and valve solenoid, spring force moves the cylinder rod to the start position. The crane is anchored. Breaking speed can be adjusted by check throttle valve. Down direction increase the speed. The swinging bearing is mounted at the end of the cylinder rod. For low temperature operation device is equipped with heater. Actuators of other dimensions and characteristics are available on customer request.



- EM** solenoid connector
- TE** thermostat
- GR** heater
- NO** oil filling port
- VS** pressure relief valve
- M** presure gauge
- KO** oil level indicator
- IC** oil drain plug
- PNV** check throttle valve



HYDRAULIC POWER PACKS



Hydraulic power units are drive aggregates that electrical energy converts to hydraulic and so, over cylinder and hydro-motor, perform corresponding mechanical linear or rotational work.

Hydraulic power units are designed as a compact unit consisting of:

- Reservoir
- Electric motor coupled with hydraulic pump
- Suction filter
- Pressure line filter
- Safety valve
- Visual fluid level indicator
- Filling plug with air filter

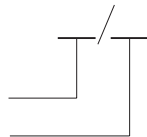
Types and nominal sizes of components are chosen according to the required technical characteristics of aggregates.

On the customer request power units with additional drive and control elements are available, such as: valves (flow and pressure control, check valves, distributing valves) single mounting or composed in blocks, hydraulic accumulators, oil level indicators, temperature electric indicators, heaters, coolers etc.

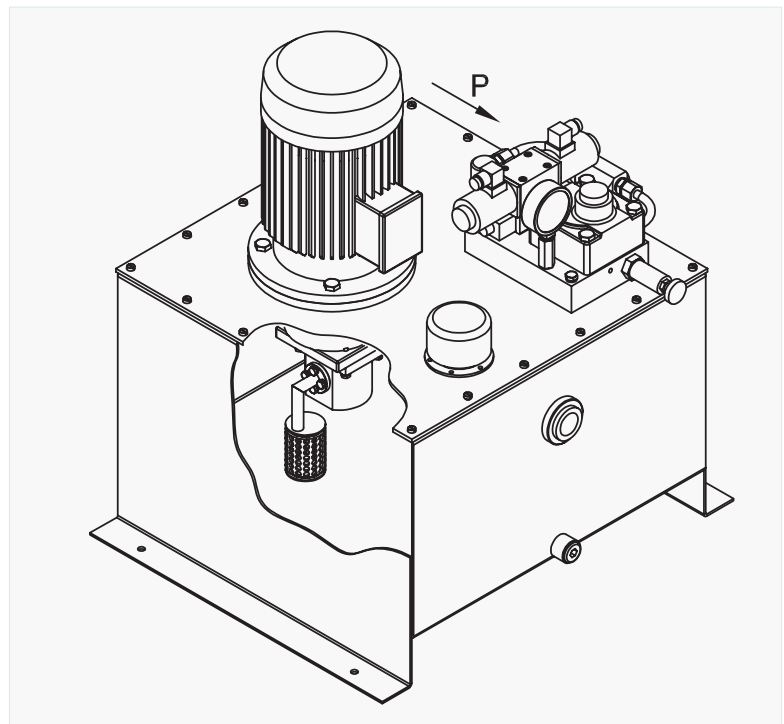
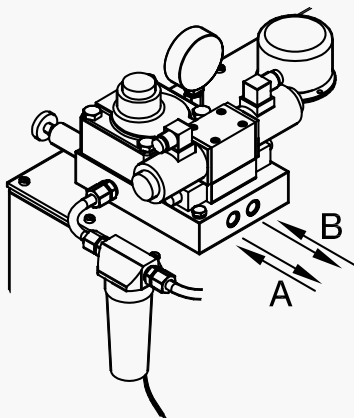
ORDERING CODE

Working pressure

Pump displacement



View "P"



Max working pressure	160 (300) bar *
Fluid - mineral oil	10 to 400 mm ² /s
Ambient temperature	-20 to +50°C
Tank volume	20 to 250 dm ³
Flow rate	0 to 160 dm ³ /min

* 160 bar - gear pump
300 bar - piston pumps

HYDRAULIC CYLINDERS

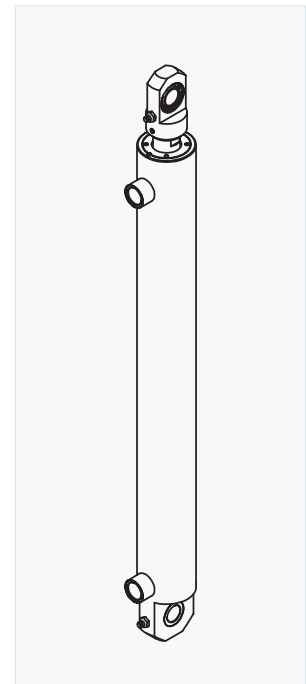
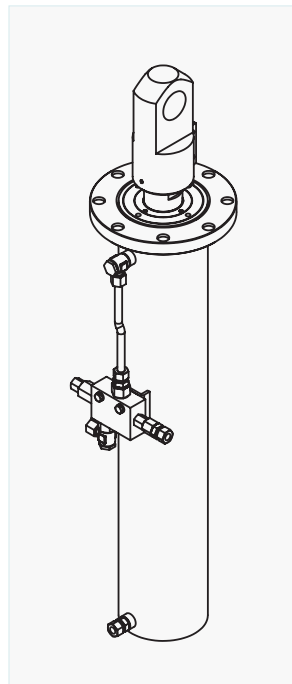
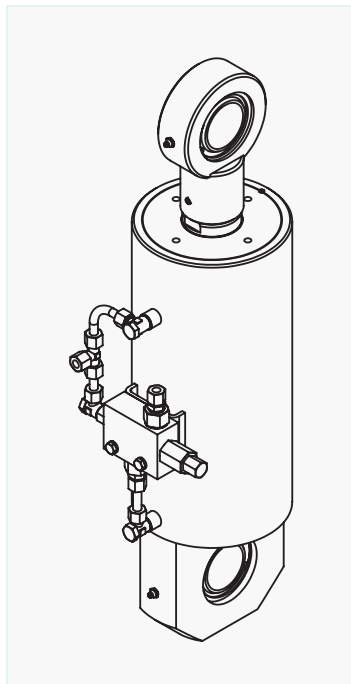
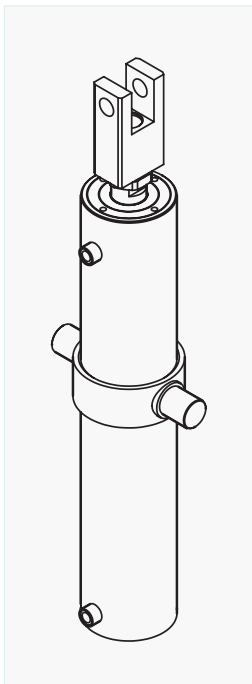


The Fluidotehnic range of hydraulic cylinders meets the most advanced requirements for operation in very hard working conditions such as in surface exploitation plants, mines, iron plants, cokery plants, foundries, cement works and construction machinery. Different construction options are available such as single and double acting cylinders, with or without strokeend cushioning, and plungers.

Hydraulic cylinders by Fluidotehnic are of reliable technical solution, high precisely treatment of the parts, high quality heat treatment and surface processing,

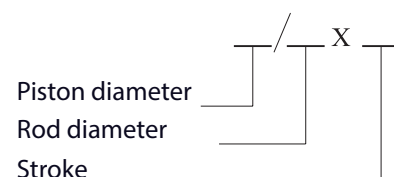
The cylinder rods are made of hardened and tempered carbon steel, one or multi layer chromed, depends of application and customer request.

Proper and high quality seals provide low friction and long time exploitation.

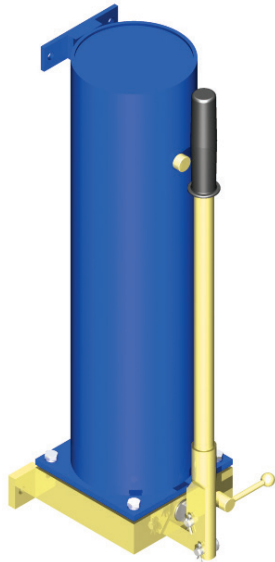


Max working pressure	500 bar
Fluid - mineral oil	10 to 400 mm ² /s
Ambient temperature	-20 to +50 °C
Piston diameter	25 to 250 mm
Stroke	to 2 000 mm
Speed	max 0,5 m/s
Load direction	along cylinder axis
Installation position	any position

ORDERING CODE

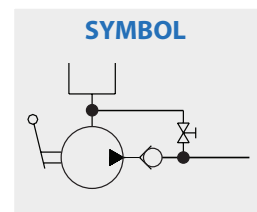
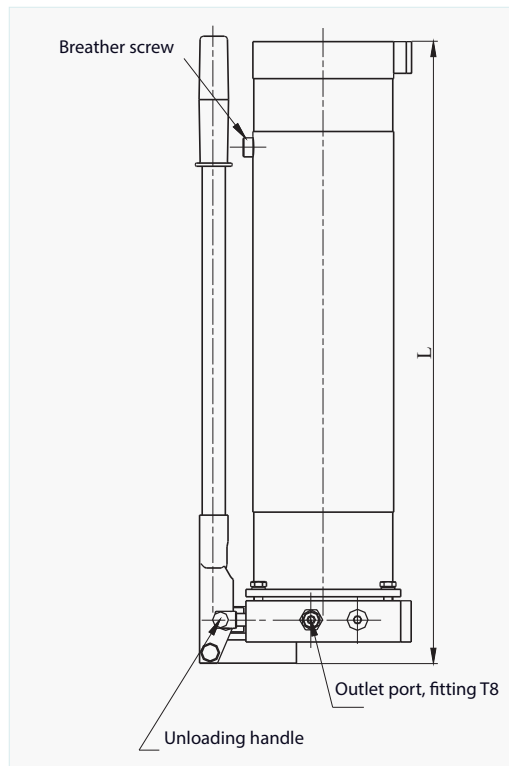
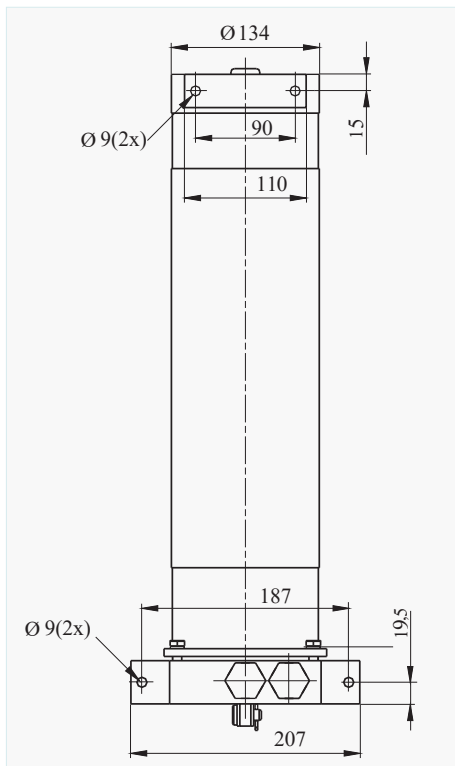


SINGLE ACTING HAND PUMP



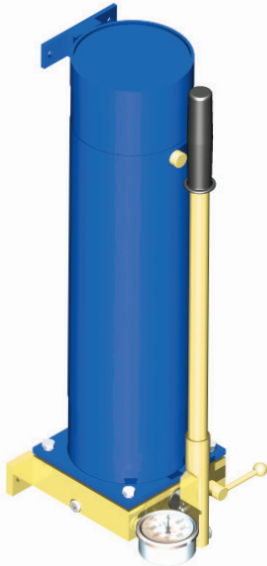
Hand pump operates in combination with single acting cylinder. High-pressure hose of 3m length is included in delivery. Cylinder has to be ordered separately. Robust design, high precisely part treatment, high quality seals provide long time exploitation of the hand pump.

Delivered pump is filled with oil and ready for use. Before use release the breather screw and retight the unloading handle..



Ordering code	10-8300	10-8300/1
Fluid	Mineral oil	
	Viscosity	20 to 400 mm ² /s
	Temperature	-20 to +80 °C
Adjusted pressure at relief valves	500/105 bar	
Flow	3,4/15 cm ³ /cycle	
Force at lever for maximum pressure	60 daN	
Length L	588	388
Tank volume	6 dm ³	3,5 dm ³
Mass	24 kg	21 kg

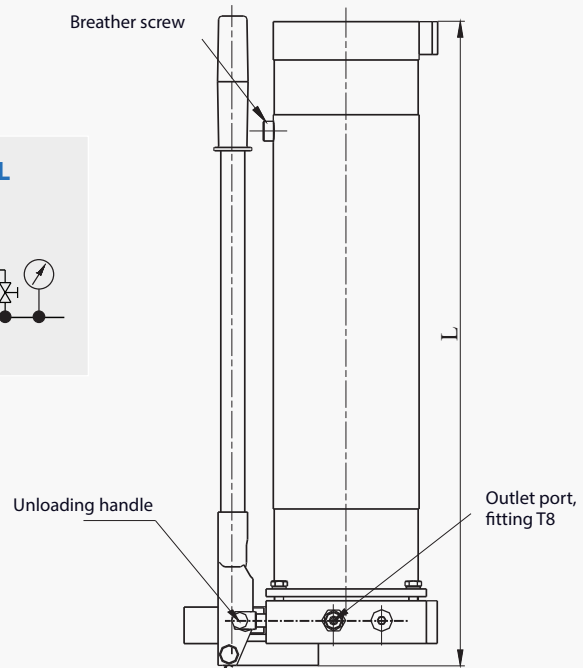
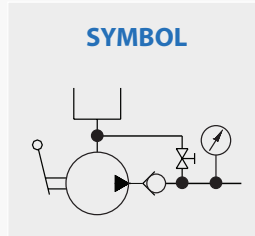
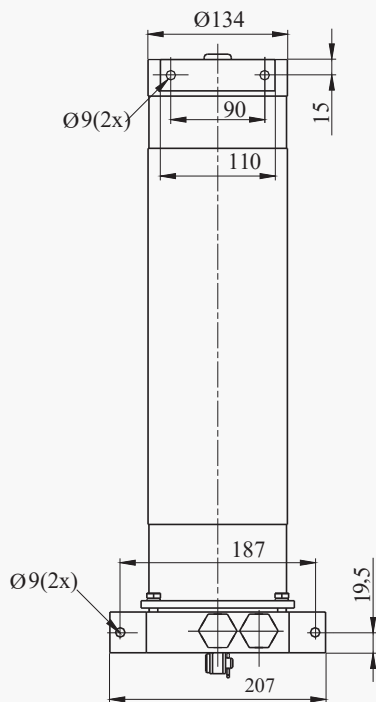
SINGLE ACTING HAND PUMP WITH PRESSURE GAUGE



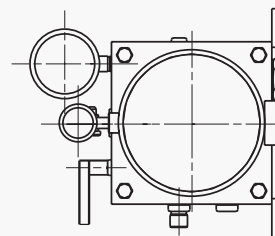
Hand pump operates in combination with single acting cylinder. High-pressure hose of 3m length is included in delivery. Cylinder has to be ordered separately. Robust design, high precisely part treatment, high quality seals provide long time exploitation of the hand pump.

Delivered pump is filled with oil and ready for use. Before use release the breather screw and retight the unloading handle.

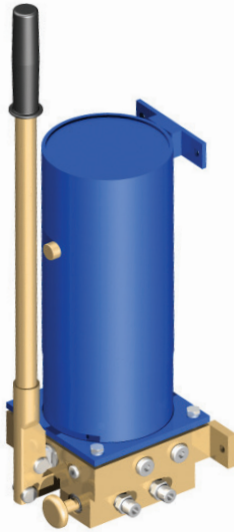
Pump is equipped with pressure gauge and table that shows the power in tonners, depending on the diameter of the cylinder and the pressure that pump achieve.



Ordering code		10-8300 M	10-8300/1 M
Fluid	Mineral oil		
	Viscosity	20 to 400 mm ² /s	
	Temperature	-20 to +80 °C	
Adjusted pressure at relief valves	500/105 bar		
Flow	3,4/15 cm ³ /cycle		
Force at lever for maximum pressure	60 daN		
Length L		588	388
Tank volume		6 dm ³	3,5 dm ³
Mass		24 kg	21 kg

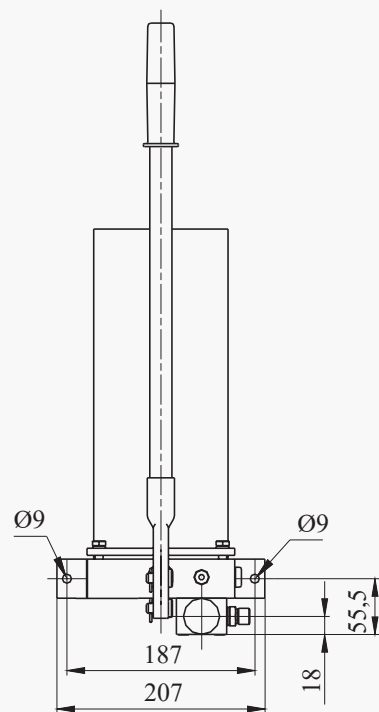
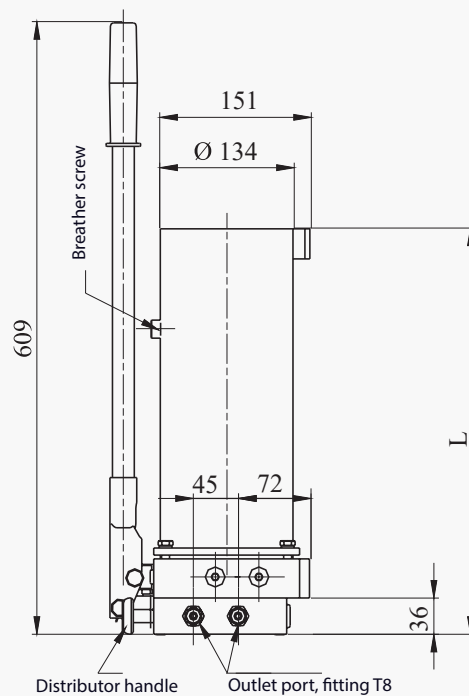


DOUBLE ACTING HAND PUMP

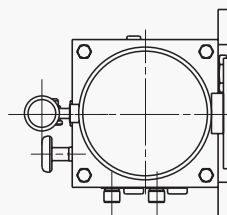
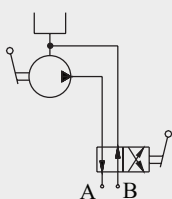


Hand pump operates in combination with double acting cylinder. High-pressure hose of 3 m length is included in delivery. Cylinder has to be ordered separately. Robust design, high precisely part treatment, high quality seals provide long time exploitation of the hand pump.

Delivered pump is filled with oil and ready for use. Before use release the breather screw and retight the unloading handle.



SYMBOL



Ordering code	10-8350	10-8350/1
Fluid	Mineral oil	
	Viscosity	20 to 400 mm ² /s
	Temperature	-20 to +80 °C
Adjusted pressure at relief valves	500/105 bar	
Flow	3,4/15 cm ³ /cycle	
Force at lever for maximum pressure	60 daN	
Length L	588	388
Tank volume	6 dm ³	3,5 dm ³
Mass	25 kg	22 kg

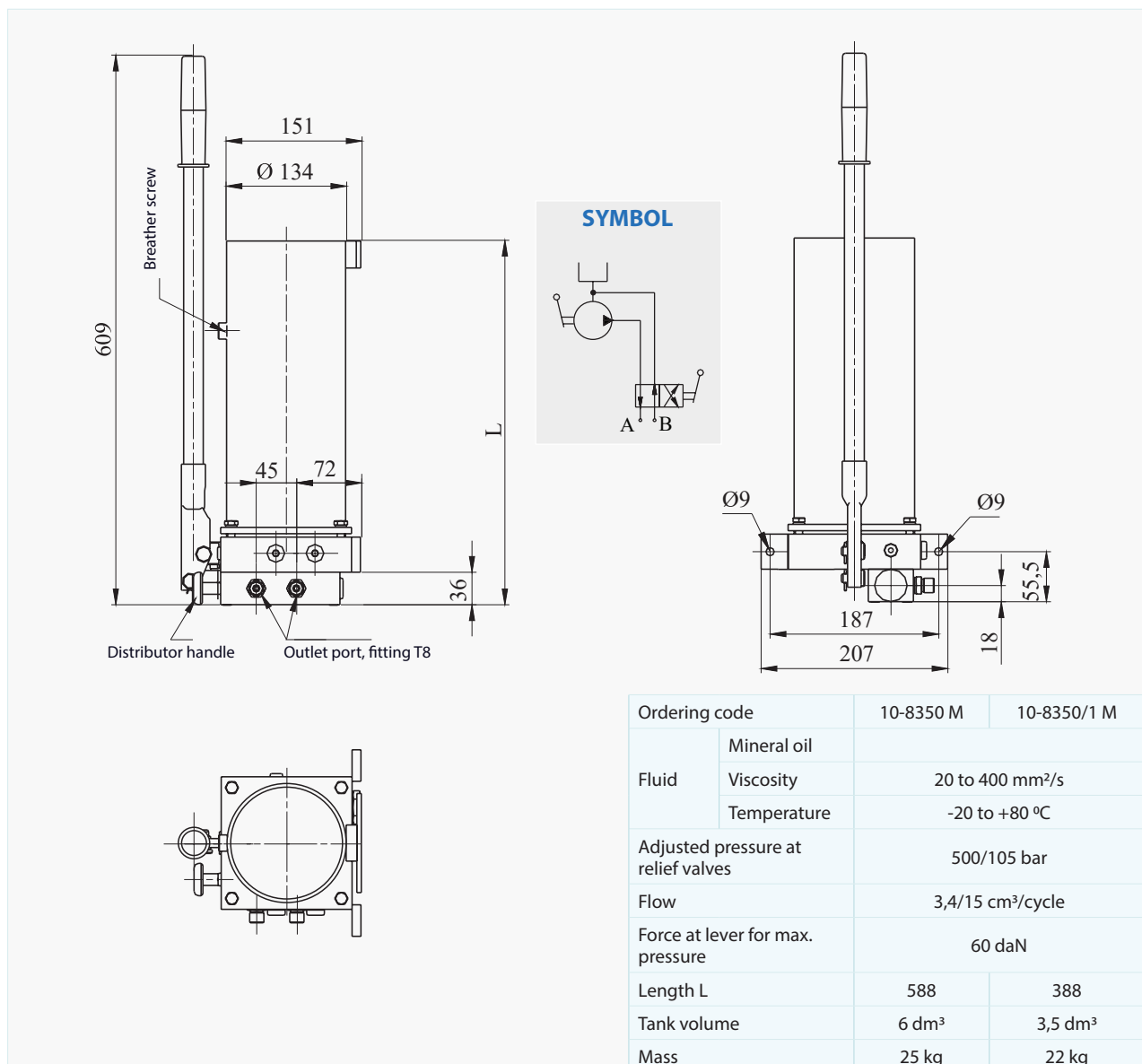
DOUBLE ACTING HAND PUMP WITH PRESSURE GAUGE



Hand pump operates in combination with double acting cylinder. High-pressure hose of 3 m length is included in delivery. Cylinder has to be ordered separately. Robust design, high precisely part treatment, high quality seals provide long time exploitation of the hand pump.

Delivered pump is filled with oil and ready for use. Before use release the breather screw and retight the unloading handle.

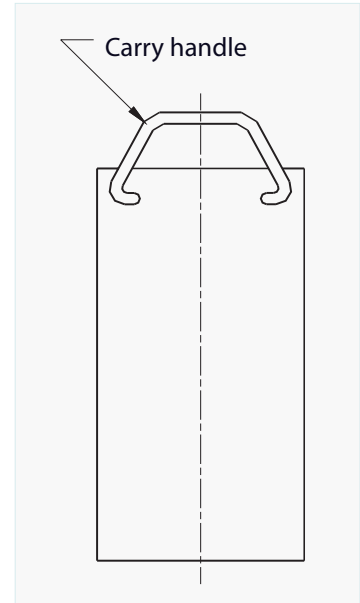
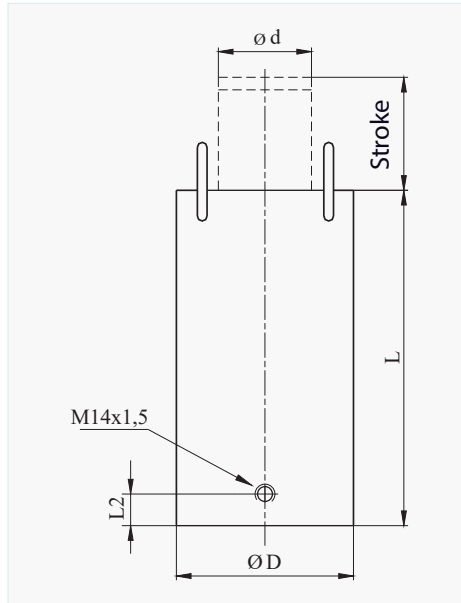
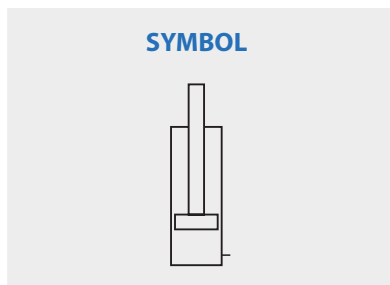
Pump is equipped with pressure gauge and table that shows the power in tonners, depending on the diameter of the cylinder and the pressure that pump achieve.



SINGLE ACTING LIFTING CYLINDERS



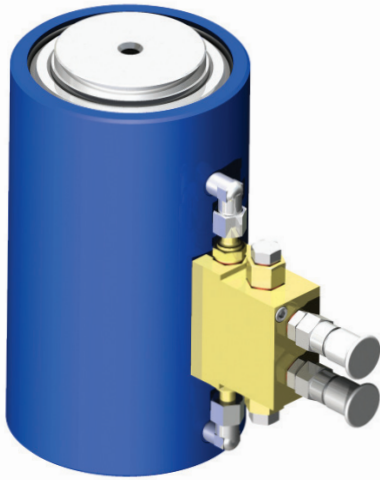
It is applied for cargo lifting. Robust design, high precisely part treatment, high quality seals provide long time exploitation of the cylinder. Rejecting movement of the cylinder is achieved by means of the external force (load). Various values of the load capacity and strokes are available on customer request.



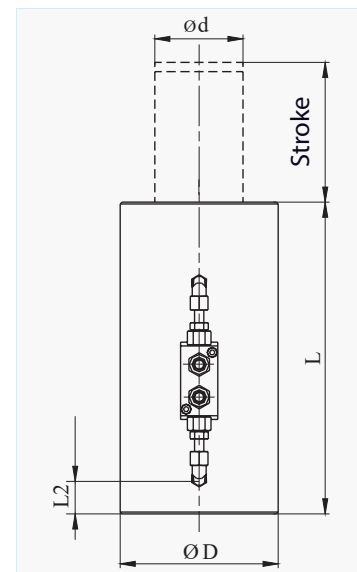
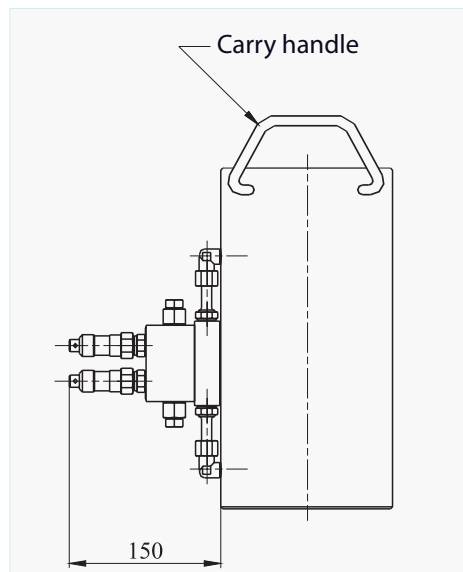
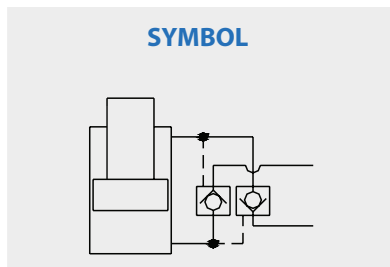
Type	Load capacity (daN)	Stroke	D	d	L	L2	Mass (kg)
JC 6/65	6.300	65	60	30	140	30	3,4
JC 10/65	9.800	65	70	40	185	30	5,6
JC 16/65	15.600	65	85	45	197	30	8,7
JC 25/65	25.100	65	110	45	235	40	15,1
JC 25/100	25.100	100	110	50	270	40	17,9
JC 40/65	39.200	65	135	75	245	40	23,6
JC 40/100	39.200	100	135	75	280	40	25,2
JC 60/65	61.300	65	155	85	250	40	37,2
JC 60/150	61.300	150	155	85	335	40	41,3
JC 80/65	76.900	65	165	95	255	40	38,3
JC 80/150	76.900	150	165	95	340	40	39,7
JC 100/65	100.500	65	195	105	255	40	48,5
JC 100/200	100.500	200	195	105	390	40	66,2
JC 160/100	157.000	100	240	145	290	50	86,7
JC 200/100	198.700	100	270	175	300	50	98,8
JC 250/100	245.300	100	300	200	312	50	125

Fluid	Mineral oil	
	Viscosity	20 to 400 mm ² /s
Temperature	-20 to +80 °C	
Max working pressure	500 bar	
Piston speed	max 0,01 m/s	
Load direction	along the axis of cylinder	

DOUBLE ACTING LIFTING CYLINDERS



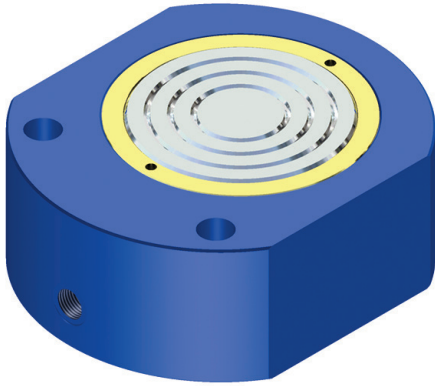
It is applied for cargo lifting. Robust design, high precisely part treatment, high quality seals provide long time exploitation of the cylinder. Rejecting movement of the cylinder is achieved by means of the external force (load). Various values of the load capacity and strokes are available on customer request.



Type	Load capacity	Stroke	D	d	L	L2	Mass
	(daN)						
DC 25/65	25.100	65	110	45	235	40	17,6
DC 25/100	25.100	100	110	50	270	40	20,4
DC 40/65	39.200	65	135	75	245	40	26,1
DC 40/100	39.200	100	135	75	280	40	27,7
DC 60/65	61.300	65	155	85	250	40	39,7
DC 60/150	61.300	150	155	85	335	40	43,8
DC 80/65	76.900	65	165	95	255	40	42,1
DC 80/150	76.900	150	165	95	340	40	43,4
DC 100/65	100.500	65	195	105	255	40	52,2
DC 100/200	100.500	200	195	105	390	40	69,9
DC 160/100	157.000	100	240	145	290	50	90,4
DC 200/100	198.700	100	270	175	300	50	102,5
DC 250/100	245.300	100	300	200	312	50	128,7

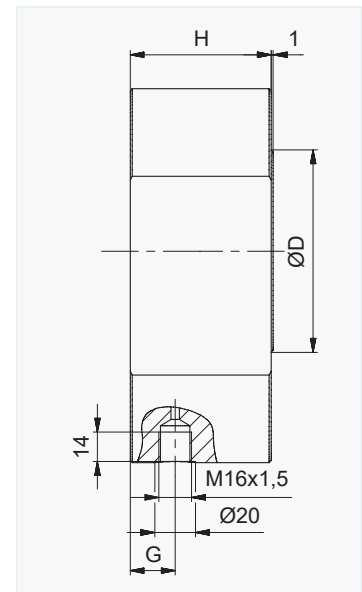
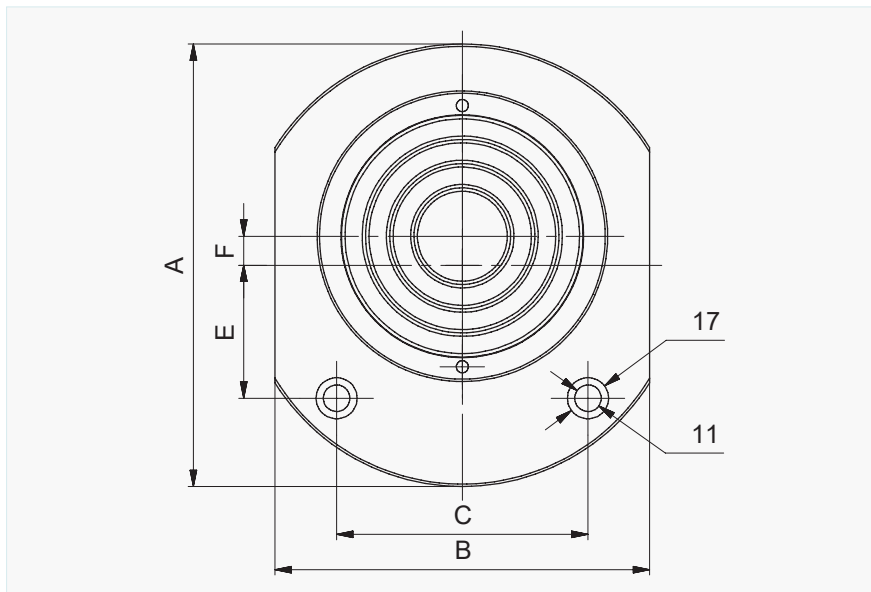
Fluid	Mineral oil	
	Viscosity	20 to 400 mm ² /s
Temperature	-20 to +80 °C	
Max working pressure	500 bar	
Piston speed	max 0,01 m/s	
Load direction	along the axis of cylinder	

LOW HEIGHTS CYLINDERS



Low heights cylinders are intended for achieving great power with small strokes. Due to the small dimensions they can be installed in places where space is very cramped. Cylinders are single-acting and strictly must be taken care that declared stroke is not exceeded, otherwise cylinder and seals can be damaged. Their robust construction, precise production and high quality sealing material are the parameters for the long life of device. The construction is determined Design of . the cylinder allows the piston back to the starting position due to the load.

On the customer request cylinders may have other strokes and load capacity.



Type	Load (daN)	Stroke	D								Mass (kg)
			A	B	C	E	F	G	H		
JC-P 6/10	6.300	10	40	92	71	50	24	11	22,5	45	3
JC-P 8/10	7.900	10	45	106	80	58	25	12,5	22,5	45	4,5
JC-P 10/10	9.800	10	50	120	90	68	25	15	22,5	47	6
JC-P 25/15	25.100	15	80	150	126	85	35	12	22,5	64	11
JC-P 40/15	39.200	15	100	183	155	104	55	12	22,5	69	13
JC-P 100/15	100.500	15	160	265	240	180	70	10	30	90	19
JC-P 160/15	157.000	15	200	330	310	310	84	10	43	112	36

Fluid	Mineral oil	
	Viscosity	20 to 400 mm ² /s
Temperature	-20 to +80 °C	
Max working pressure	500 bar	
Piston speed	max 0,01 m/s	
Load direction	along the axis of cylinder	



SERBIA
36210 VRNJACKA BANJA
Rudjinci 175/A
tel/fax: +381-36-631-710
E-mail: office@fluidotehnic.com
Web: www.fluidotehnic.com

Matični broj: 06568939
Šifra delatnosti: 2822
PIB: 100918689
Reg. broj: 11506568939
Br. Reg. Upisa: 1-14429-00



EC DECLARATION OF CONFORMITY / DECLARATION ON INSTALLATION

DEKLARACIJA O USAGLAŠENOSTI / DEKLARACIJA O UGRADNJI

We hereby declare that the following products

Izjavljujemo da su sledeći uređaji

Hydraulic cylinders (Hidraulički cilindri)
Hand pumps (Ručne pumpe)
Actuators (Aktuatori)
Hydraulic presses (Hidraulične prese)
Change-over valves (Hidraulički razvodnici)
Electric driven change-over valve (Elektromotorni razvodnici)
Pressure and flow valves (Ventili pritiska i protoka)

Are designed and produced in accordance with the safety requirements according to the following regulations:

Projektovani i proizvedeni u skladu sa bezbednosnim zahtevima prema sledećim propisima:

Machinery Directive EC/2006/42
(Mašinska direktiva EC/2006/42)

Low voltage directive EC/2014/35
(Niskonaponska direktiva EC/2014/35)

in accordance with the following standards:
i u skladu sa sledećim standardima:

Safety of machinery - General principles for design

- **Risk assessment and risk reduction EN ISO 12100:2010**
Bezbednost mašina - Opšti principi za projektovanje
- Ocena rizika i smanjenje rizika SRPS ISO 12100:2014

Safety of machinery - Electrical equipment of machines - Part 1: EN 60204-1:2016
Bezbednost mašina - Električna oprema mašina - Deo 1: EN 60204-1:2016

Declaration on installation in the sense of EC Machinery Directive (2006/42/EC) Annex II B

Izjava o ugradnji u skladu sa EC Mašinskom direktivom (2006/42/EC) Anex II B

Product of "FLUIDOTEHNIC" assemble into mechanical devices and equipment. Start-up is not admissible unless it has been verified that the whole equipment, meets the requirements defined in the EC machinery Directive (2006/42/EC)

Proizvod "FLUIDOTEHNIC"-a se ugrađuje u drugu opremu i dodatne uređaje. Pokretanje nije dozvoljeno sve dok i relevantna oprema u koju se ugrađuju ne bude u skladu sa Mašinskom direktivom (2006/42/EC)

The manufacturer undertakes to supply the relevant information of incomplete machine on request to responsible inspector by electronic way. Technical documents of the machine is prepared in accordance with Annex VII, part B Machinery Directive (2006/42/EC)

Proizvođač se obavezuje da će elektronskim putem dostaviti odgovarajuće podatke o delimično završenoj mašini nadležnom inspektorima na njegov zahtev. Tehnička dokumentacija je izrađena u skladu sa Anexom 7, deo B Mašinske direktive.

Vrnjačka Banja, 01/02/2017 godine



Sjivić Miroslav, General Manager

The EC Declaration of Conformity is only valid in conjunction with confirmation that the device has been correctly applied, installed, inspected and maintained according to the operating instructions provided. The validity of the declaration will cease in case of any modification and/or supplement not previously approved by "FLUIDOTEHNIC".

Ova deklaracija o usaglašenosti važi samo u slučaju da je uređaj pravilno ugrađen, iskontrolisan i da se koristi i održava u skladu sa uputstvom za rukovanje i održavanje. Važenje izjave prestaje u slučaju bilo kakve modifikacije ili dodatka koji nisu prethodno odobreni od "FLUIDOTEHNIC"-a.

Fluidotehnic d.o.o.
Serbia
36210 Vrnjacka Banja
Rudjinci 175/A
Tel: +381-(0)36-631-710
+381-(0)36-631-711
Fax: +381-(0)36-631-712
www.fluidotehnic.com
office@fluidotehnic.com